

Pitch: .050" x .100"

# INSULATION DISPLACEMENT SOCKET

## SPECIFICATIONS

### ENVIRONMENTAL

Temperature Range: -55°C to +105°C

### MECHANICAL

Insulator Material: Glass-filled polyester, blue, UL94V-0

Contact Material: Phosphor Bronze

Contact Plating: Mating Area: 12µ IN gold

Terminates To: .025" cable, 30 AWG

### ELECTRICAL

Current Rating: 0.5 AMP

Consult factory for additional plating options



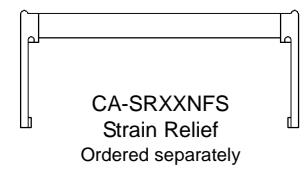
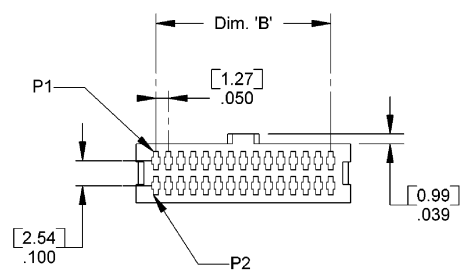
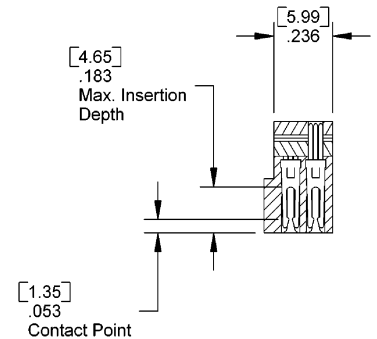
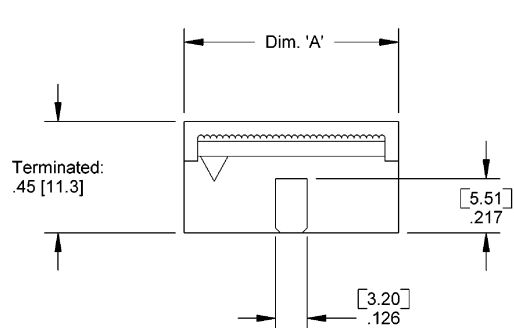
## CA- POSITION NFS-12G

POSITION	
10	50
16	60
20	64
26	68
34	80
40	100

DIMENSIONS		
Position	A	B
10	.436 [11.07]	.200 [5.08]
16	.586 [14.88]	.350 [8.89]
20	.686 [17.42]	.450 [11.43]
26	.836 [21.23]	.600 [15.24]
34	1.036 [26.31]	.800 [20.32]
40	1.186 [30.12]	.950 [24.13]
50	1.436 [36.47]	1.200 [30.48]
60	1.686 [42.82]	1.450 [36.83]
64	1.786 [45.36]	1.550 [39.37]
68	1.886 [47.90]	1.650 [41.91]
80	2.186 [55.52]	1.950 [49.53]
100	2.686 [68.22]	2.450 [62.23]



Patented 4 Point/3 Blade



Mating Product: NFH (page 96), NFHL (page 94), NFHR (page 97), NFHLR (page 95)

Drawing Number: CA-610168



For more information please contact our customer service department or visit our website at circuitassembly.com

Circuit Assembly Worldwide Hqtrs. 18 Thomas Street, Irvine, CA 92618-2777 USA Tel 1-949-855-7887 Fax 1-949-855-4298