

Pitch: .100" x .200"

# EDGE CARD .460" HIGH RIGHT ANGLE

## SPECIFICATIONS

### ENVIRONMENTAL

Temperature Range: -55°C to +105°C

### MECHANICAL

Insulator Material: Glass-filled polyester, green, UL94V-0

Contact Material: Copper Alloy

Contact Plating: Contact Area: 20µ IN gold

Tail Area: 150µ IN tin

### ELECTRICAL

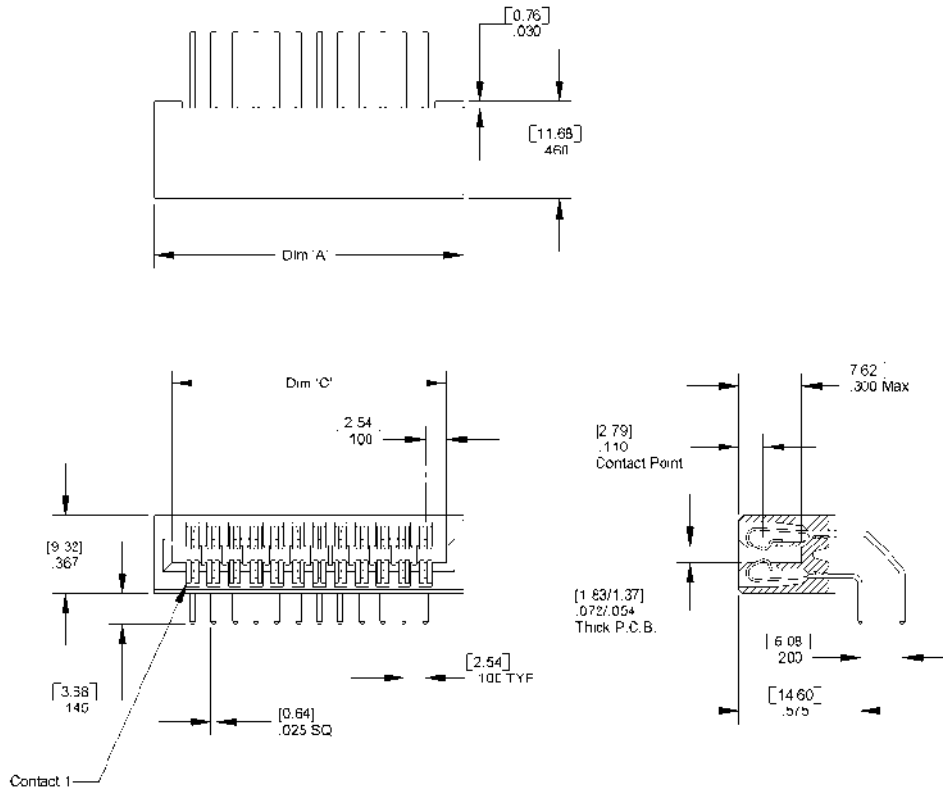
Current Rating: 1 AMP

Consult factory for additional options

## CA- POSITION ECR-3-SD

POSITION	
20	40
24	44
26	50
30	60
34	72
36	

DIMENSIONS		
Position	A	C
20	1.260 [32.00]	1.100 [27.94]
24	1.460 [37.08]	1.300 [33.02]
26	1.560 [39.62]	1.400 [35.56]
30	1.760 [44.70]	1.600 [40.64]
34	1.960 [49.78]	1.800 [45.72]
36	2.060 [52.32]	1.900 [48.26]
40	2.260 [57.40]	2.100 [53.34]
44	2.460 [62.48]	2.300 [58.42]
50	2.760 [70.10]	2.600 [66.04]
60	3.260 [82.80]	3.100 [78.74]
72	3.860 [98.04]	3.700 [93.98]



Mating Product: PCB edge card  
Drawing Number: CA-610061

