



D-SUB, HIGH DENSITY PLUG, VERTICAL

SPECIFICATIONS

ENVIRONMENTAL

Temperature Range: -55°C to +105°C

MECHANICAL

Insulator Material: Glass-filled thermoplastic, black, UL94V-0

Shell Material: Steel

Contact Material: Copper Alloy

Contact Plating: Gold Flash

ELECTRICAL

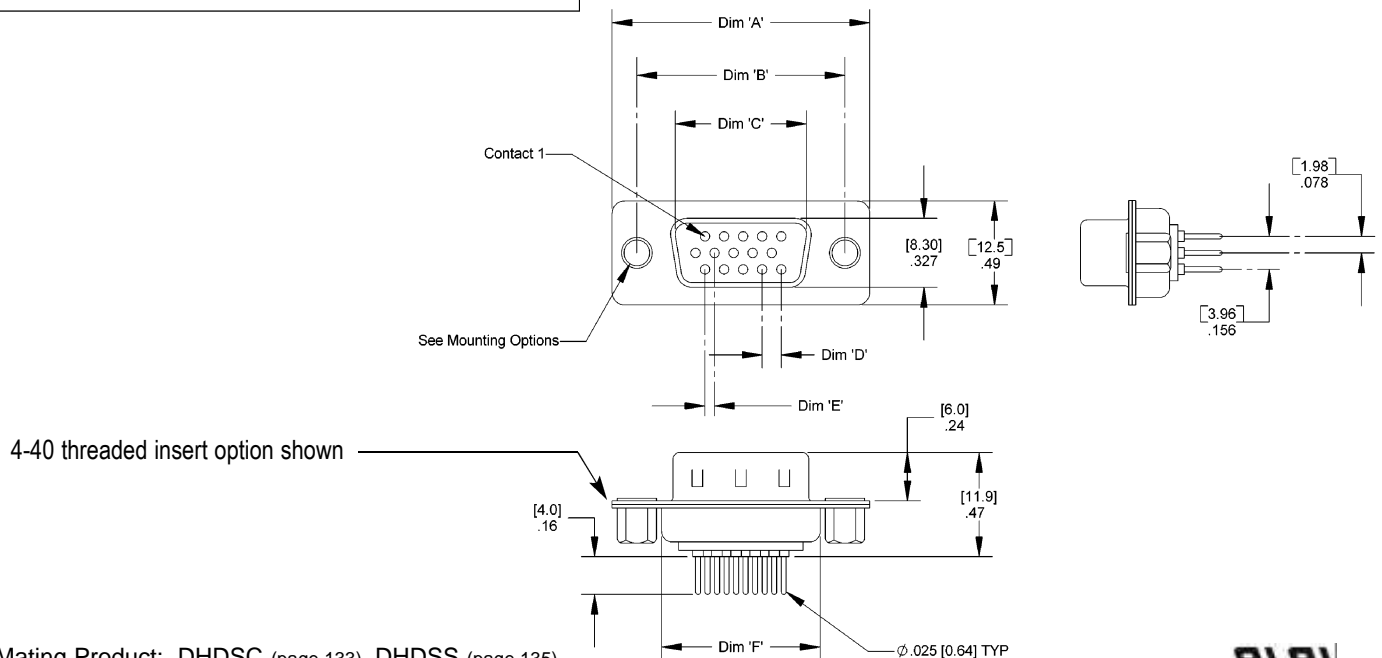
Current Rating: 1 AMP

Consult factory for additional options

CA- DHDP-

POSITION		MOUNTING
15	44	Blank = .120" thru hole
26	62	4 = 4-40 threaded insert

DIMENSIONS						
Position	A	B	C	D	E	F
15	1.21 [30.7]	.984 [24.99]	.666 [16.92]	.090 [2.29]	.045 [1.15]	.76 [19.3]
26	1.54 [39.1]	1.311 [33.30]	.994 [25.25]	.090 [2.29]	.045 [1.15]	1.09 [27.7]
44	2.09 [53.1]	1.854 [47.09]	1.534 [38.96]	.090 [2.29]	.045 [1.15]	1.62 [41.1]
62	2.73 [69.3]	2.500 [63.50]	2.182 [55.42]	.095 [2.41]	.047 [1.20]	2.26 [57.4]



Mating Product: DHDSC (page 133), DHDSS (page 135)
Drawing Number: CA-620401



For more information please contact our customer service department or visit our website at circuitassembly.com

Circuit Assembly Worldwide Hqtrs. 18 Thomas Street, Irvine, CA 92618-2777 USA Tel 1-949-855-7887 Fax 1-949-855-4298

