



PLCC PACKAGING SOCKET .320" HIGH, JEDEC TYPE A

SPECIFICATIONS

ENVIRONMENTAL

Temperature Range: -55°C to +105°C

MECHANICAL

Insulator Material: Glass-filled polyester, black, UL94V-0

Contact Material: Copper Alloy

Contact Plating: 250µ IN Tin

ELECTRICAL

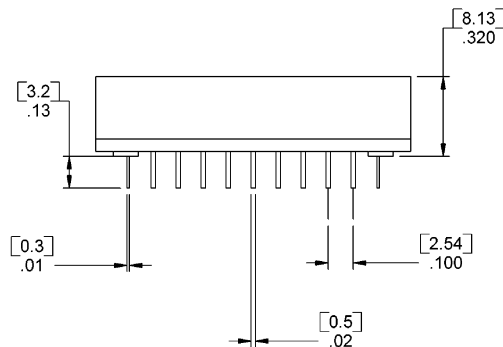
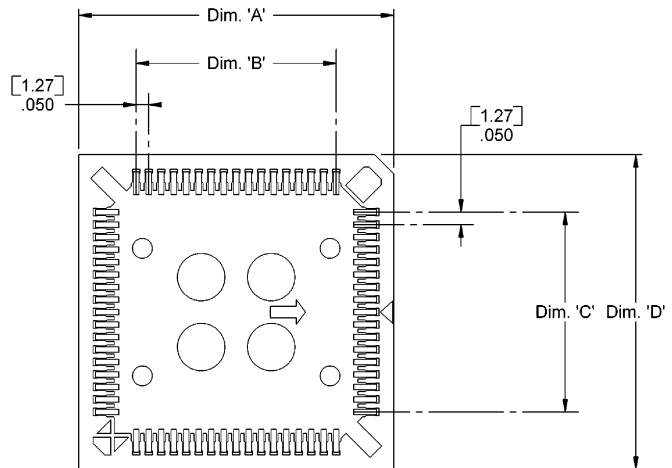
Current Rating: 1 AMP

Consult factory for additional options

CA- POSITION SPC-T

POSITION	
20	52
28	68
32	84
44	

DIMENSIONS				
Position	A	B	C	D
20	.610 [15.49]	.200 [5.08]	.200 [5.08]	.610 [15.49]
28	.720 [18.29]	.300 [7.62]	.300 [7.62]	.720 [18.29]
32	.838 [21.29]	.400 [10.16]	.300 [7.62]	.838 [21.29]
44	.925 [23.50]	.500 [12.70]	.500 [12.70]	.925 [23.50]
52	1.019 [25.88]	.600 [15.24]	.600 [15.24]	1.019 [25.90]
68	1.224 [31.09]	.800 [20.32]	.800 [20.32]	1.224 [31.09]
84	1.417 [35.99]	1.000 [25.40]	1.000 [25.40]	1.417 [35.99]



Mating Product: board mount
Drawing Number: CA-610213

