

### DIP PACKAGING SOCKET .160" HIGH

#### SPECIFICATIONS

##### ENVIRONMENTAL

Temperature Range: -55°C to +105°C

##### MECHANICAL

Insulator Material: Glass-filled polyester, black, UL94V-0

Contact Material: Copper Alloy

Contact Plating: Tin/lead Alloy

##### ELECTRICAL

Current Rating: 1 AMP

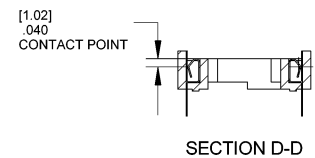
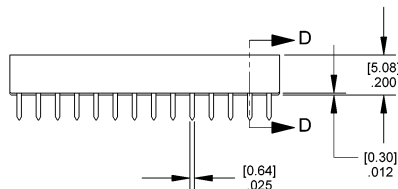
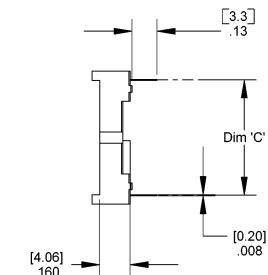
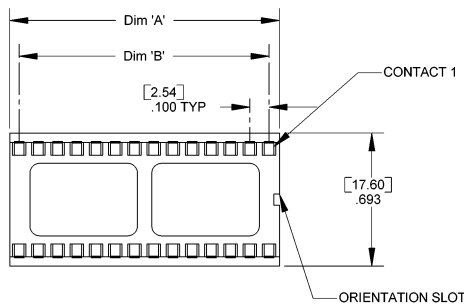
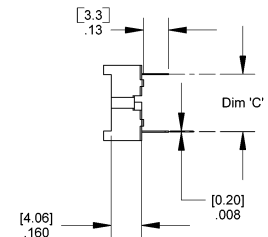
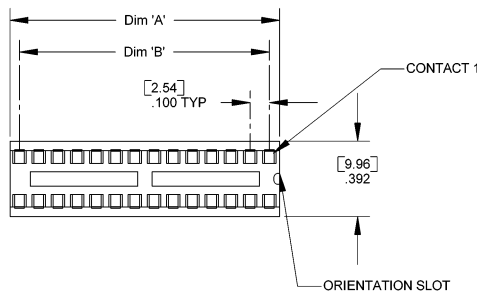
Consult factory for additional options

### CA- POSITION SDL-1T

POSITION	
06	24*
08	28*
14	32
16	40
18	48
20	

DIMENSIONS			
Position	A	B	C
06	.300 [7.62]	.200 [5.08]	.300 [7.62]
08	.400 [10.16]	.300 [7.62]	.300 [7.62]
14	.700 [17.78]	.600 [15.24]	.300 [7.62]
16	.800 [20.32]	.700 [17.78]	.300 [7.62]
18	.900 [22.86]	.800 [20.32]	.300 [7.62]
20	1.000 [25.40]	.900 [22.86]	.300 [7.62]
24	1.200 [30.48]	1.100 [27.94]	.600 [15.24]
24-3*	1.200 [30.48]	1.100 [27.94]	.300 [7.62]
28	1.400 [35.56]	1.300 [33.02]	.600 [15.24]
28-3*	1.400 [35.56]	1.300 [33.02]	.300 [7.62]
32	1.600 [40.64]	1.500 [38.10]	.600 [15.24]
40	2.00 [50.80]	1.900 [48.26]	.600 [15.24]
48	2.400 [60.96]	2.300 [58.42]	.600 [15.24]

\*24 & 28 position also available in .300 "C" dimension. Add -3 to end of part number



Mating Product: IDPB (page 84), IDP2 (page 85), Dip plugs (page 158)  
Drawing Number CA-610212

