

2



Pitch: .050"

## SCA-2, .050" CENTER PLUG SURFACE MOUNT

### SPECIFICATIONS

Meets: SCSI-3 (80 position) & FC-AL (40 position) as defined in SFF8451

### ENVIRONMENTAL

Temperature Range: -55°C to +85°C

### MECHANICAL

Insulator Material: High temperature thermoplastic black, UL94V-0

Contact Material: Phosphor Bronze

Clip Material: Brass

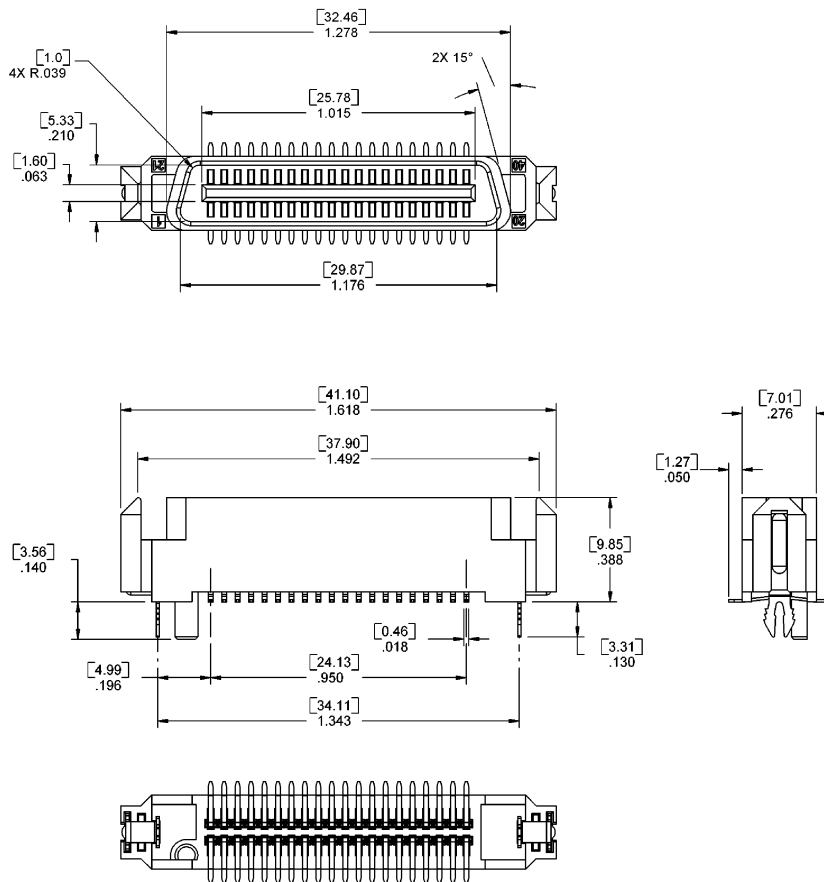
Contact Plating: Mating area: 30µ IN gold  
Tail area: 150µ IN tin  
Underplate: 50µ IN nickel

### ELECTRICAL

Current Rating: 1 AMP

Consult factory for additional options

CA-40SCA2P-F-01



Mating Product: SCA2 (pages 56-60)

Drawing Number: CA-620462

