

Pitch: .050"

## SCA2, .050" CENTER SOCKET LokDOWN™

### SPECIFICATIONS

Meets: SCSI-3 (80 position) & FC-AL (40 position)  
as defined in SFF8451

### ENVIRONMENTAL

Temperature Range: -55°C to +85°C

### MECHANICAL

Insulator Material: High temperature thermoplastic  
black, UL94V-0  
Contact Material: Phosphor Bronze  
Clip Material: Brass  
Contact Plating: Mating area: 30µ IN gold  
Tail area: 150µ IN tin  
Underplate: 50µ IN nickel

### ELECTRICAL

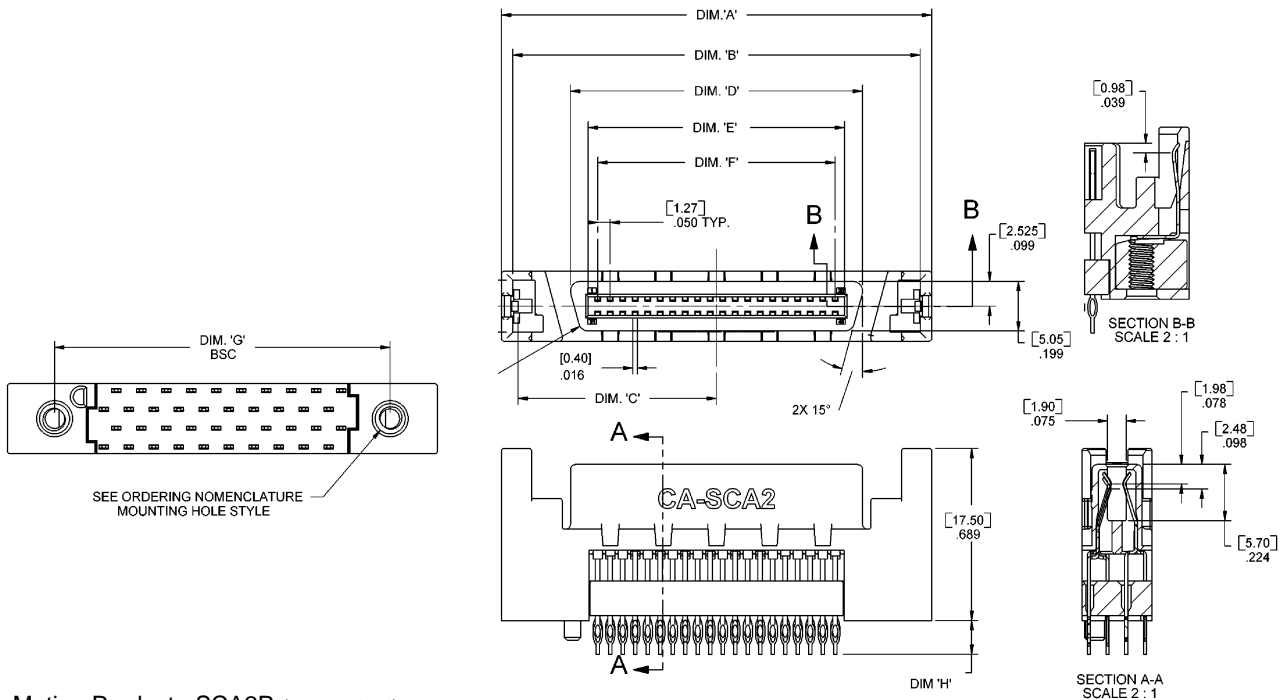
Current Rating: 1 AMP

Consult factory for additional options

CA- POSITION SCA2- TAIL F-42 MOUNT

POSITION	TAIL LENGTH	MOUNTING
40	Blank = .135"	2 = 2-56 threaded hole
80	2 = .149"	4 = 4-40 threaded hole
	3 = .181"	

DIMENSIONS							
Position	A	B	C	D	E	F	G
40	1.717 [43.60]	1.630 [41.40]	.791 [20.10]	1.168 [29.67]	1.025 [26.03]	.950 [24.13]	1.343 [34.11]
80	2.717 [69.00]	2.630 [68.80]	1.291 [32.80]	2.168 [55.07]	2.025 [51.43]	1.950 [49.53]	2.343 [59.51]



Mating Product: SCA2P (pages 61-64)  
Drawing Number: CA-610291

