

# SERIAL ATA DEVICE SOCKET RIGHT ANGLE, SMT

2

### SPECIFICATIONS

#### ENVIRONMENTAL

Temperature Range: -40°C to +85°C

#### MECHANICAL

Insulator Material: High-temperature thermoplastic, UL94V-0

Contact Material: Copper Alloy

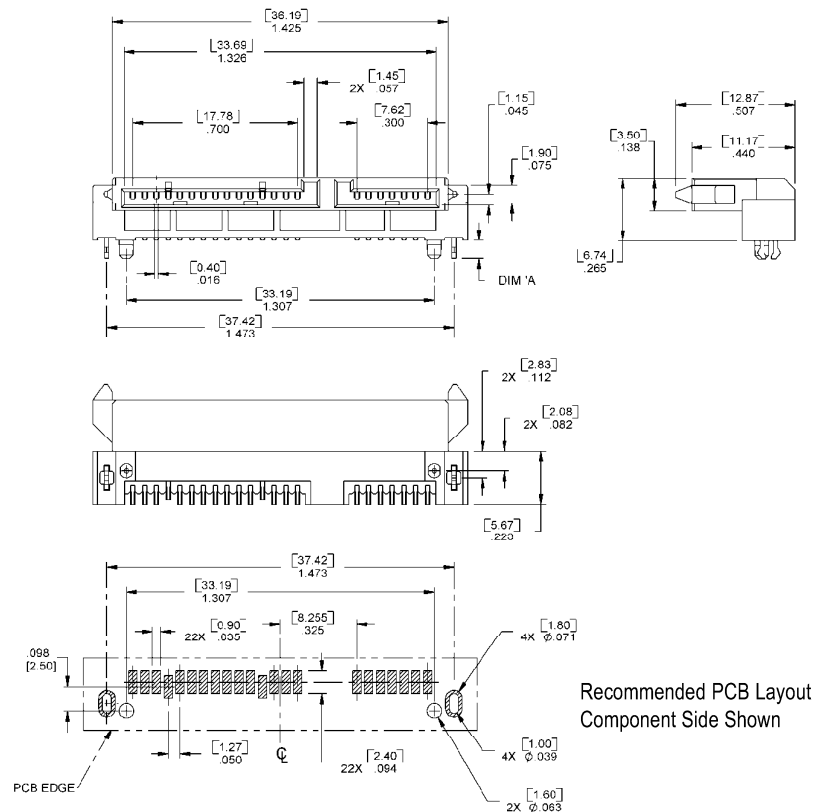
Contact Plating: See options below

#### ELECTRICAL

Current Rating: 1 AMP

CA-22SAHSR- PLATING -2- BOARDLOCK

PLATING	BOARDLOCKS (DIM A)
A = gold flash	1= No lock tabs, PCB thickness .031" - .057"
C = 15µ IN gold	2= 3 lock tabs, PCB thickness .031" - .057"
D = 5µ IN gold	3= No lock tabs, PCB thickness .057 - .070"
F = 30µ IN gold	4= 3 lock tabs, PCB thickness .057 - .070"



Mating Product: SAPP (page 25)  
Drawing Number: CA-610308

For more information please contact our customer service department or visit our website at circuitassembly.com

Circuit Assembly Worldwide Hqtrs. 18 Thomas Street, Irvine, CA 92618-2777 USA Tel 1-949-855-7887 Fax 1-949-855-4298

