



EVC, PLUG AND DISPLAY SOCKET RIGHT ANGLE

SPECIFICATIONS

ENVIRONMENTAL

Temperature Range: -20°C to +85°C

MECHANICAL

Insulator Material: Glass-filled thermoplastic, black, UL94V-0

Shell Material: Zinc Alloy

Contact Material: Phosphor Bronze

Contact Plating: See options below

ELECTRICAL

Current Rating: 1.5 AMP @ 40V

Insulation Resistance: 1000 Megohms Min.

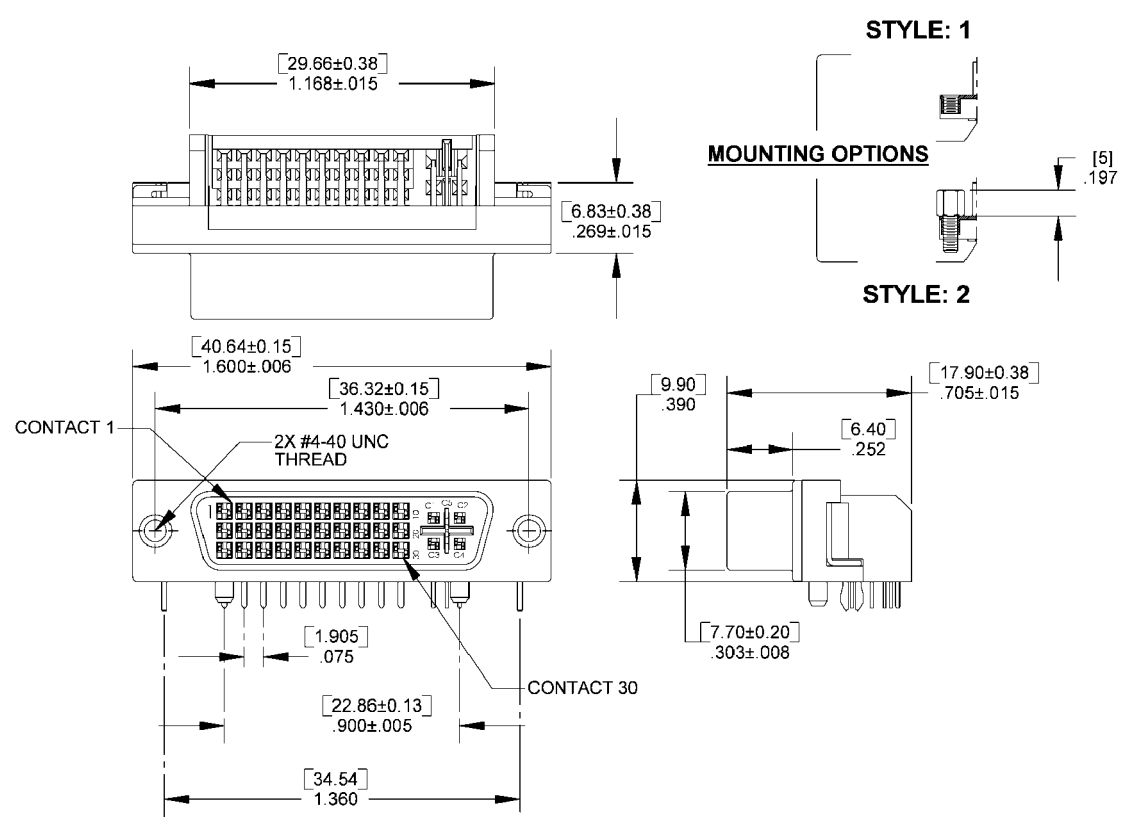
Dielectric Withstanding: 500V AC (rms)

Contact Resistance: 20 Milliohms max

Consult factory for additional options

CA- POSITION PND S TYPE R- PLATING - MNTG

| POSITION | TYPE | PLATING | MOUNTING |
|---------------------------|---------------------|-----------------|---|
| 30 (digital) | D = digital (30) | A = gold flash | 1 = 4-40 threaded insert |
| 35 (integrated or analog) | A = analog (35) | C = 15μ IN gold | 2 = 4-40 hex screwlock (pkg separately) |
| | I = integrated (35) | F = 30μ IN gold | |



Mating Product: PNDP (page 18)
 Drawing Numbers: CA-T610038, 39, 40