

Pitch: .100"

DIP PLUG OPEN FRAME - FORK SCREW MACHINE

SPECIFICATIONS

ENVIRONMENTAL

Temperature Range: -55°C to +105°C

MECHANICAL

Insulator Material: Glass-filled thermoplastic, black, UL94V-0

Contact Material: Brass

Contact Plating: 10µ IN gold

ELECTRICAL

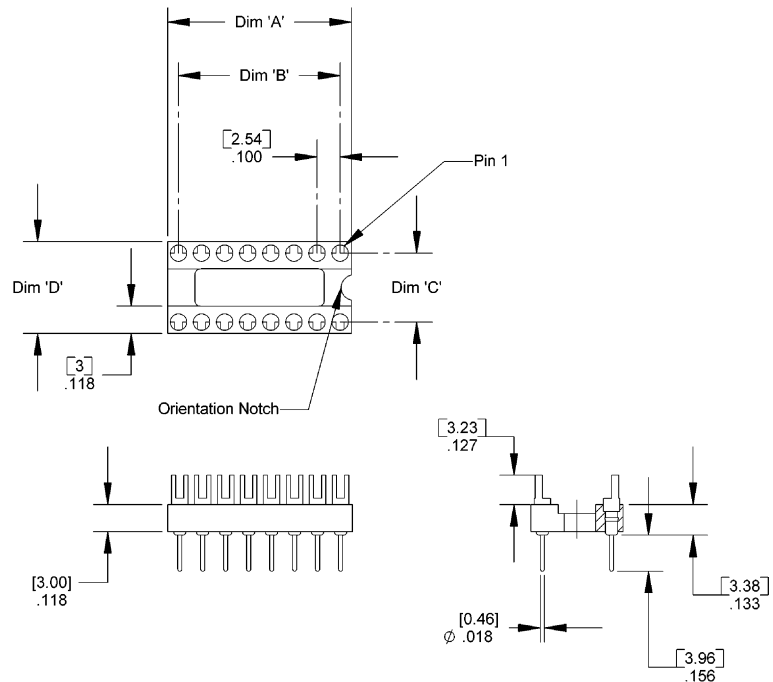
Current Rating: 1 AMP

Consult factory for additional pin configurations

CA- POSITION MP-A1B

POSITION	
06	22
08	24*
14	28
16	32
18	40
20	

DIMENSIONS				
Position	A	B	C	D
06	.300 [7.620]	.200 [5.080]	.300 [7.62]	.399 [10.13]
08	.400 [10.16]	.300 [7.620]	.300 [7.62]	.399 [10.13]
14	.700 [17.78]	.600 [15.24]	.300 [7.62]	.399 [10.13]
16	.800 [20.32]	.700 [17.78]	.300 [7.62]	.399 [10.13]
18	.900 [22.86]	.800 [20.32]	.300 [7.62]	.399 [10.13]
20	1.000 [25.40]	.900 [22.86]	.300 [7.62]	.399 [10.13]
22	1.100 [27.94]	1.000 [25.40]	.400 [10.16]	.499 [12.67]
24	1.200 [30.48]	1.100 [27.94]	.600 [15.24]	.699 [17.75]
24-3*	1.200 [30.48]	1.100 [27.94]	.300 [7.62]	.399 [10.13]
28	1.400 [35.56]	1.300 [33.02]	.600 [15.24]	.699 [17.75]
32	1.600 [40.64]	1.500 [38.10]	.600 [15.24]	.699 [17.75]
40	2.000 [50.80]	1.900 [48.26]	.600 [15.24]	.699 [17.75]



*24 position also available with .300 "C" dimension. Add -3 to end of part number.

Mating Product: MS (page 148)
Drawing Number CA-620423