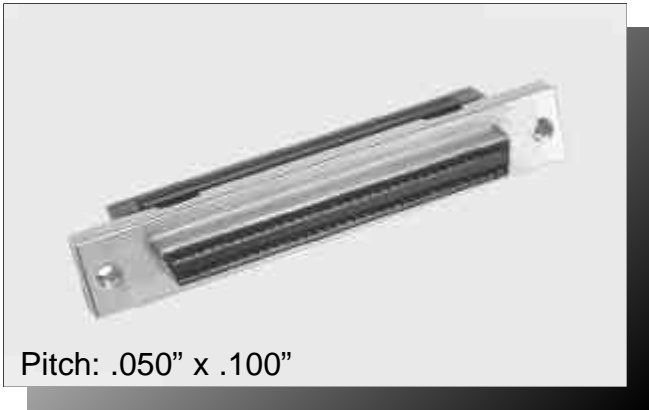


2



Pitch: .050" x .100"

## SCSI SOCKET, SCSI-3 IDT

### SPECIFICATIONS

Meets: SCSI-3 standard

### ENVIRONMENTAL

Temperature Range: -55°C to +105°C

### MECHANICAL

Insulator Material: Glass-filled polyester, black, UL94V-0

Frame Material: Die cast, zinc alloy

Contact Material: Copper Alloy

Contact Plating: Mating Area: 15µ IN gold

Terminates To: .025" cable, 30 AWG

### ELECTRICAL

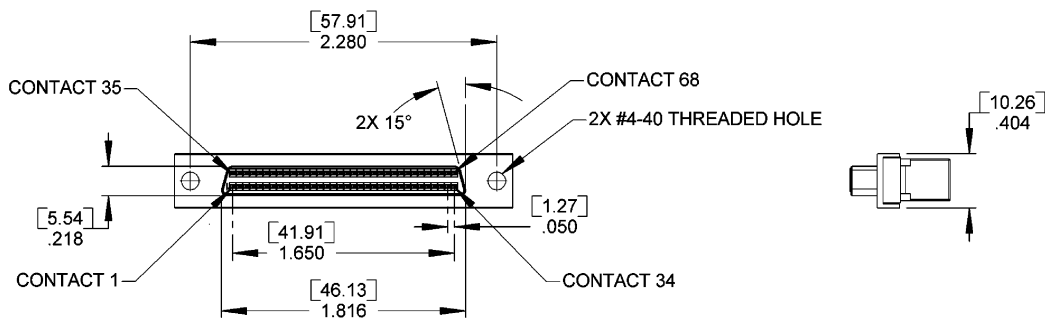
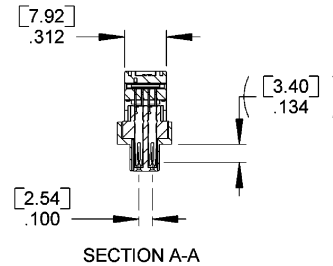
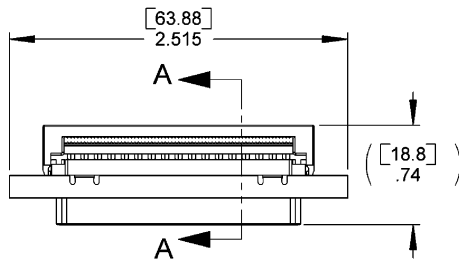
Current Rating: 0.5 AMP

Consult factory for additional options



Patented IDT Design

# CA-68MDS-C-0



Mating Product: MDP (page 44-45), NFDP (page 46)  
 Drawing Number: CA-610262

