

Pitch: .109" x .112"

## D-SUB PLUG, RIGHT ANGLE .590" FOOTPRINT

### SPECIFICATIONS

Self-retaining Board Lock  
.590 Body

### ENVIRONMENTAL

Temperature Range: -55°C to +105°C

### MECHANICAL

Insulator Material: Glass-filled thermoplastic, black, UL94V-0  
Shell Material: Steel  
Contact Material: Copper Alloy  
Contact Plating: Gold Flash

### ELECTRICAL

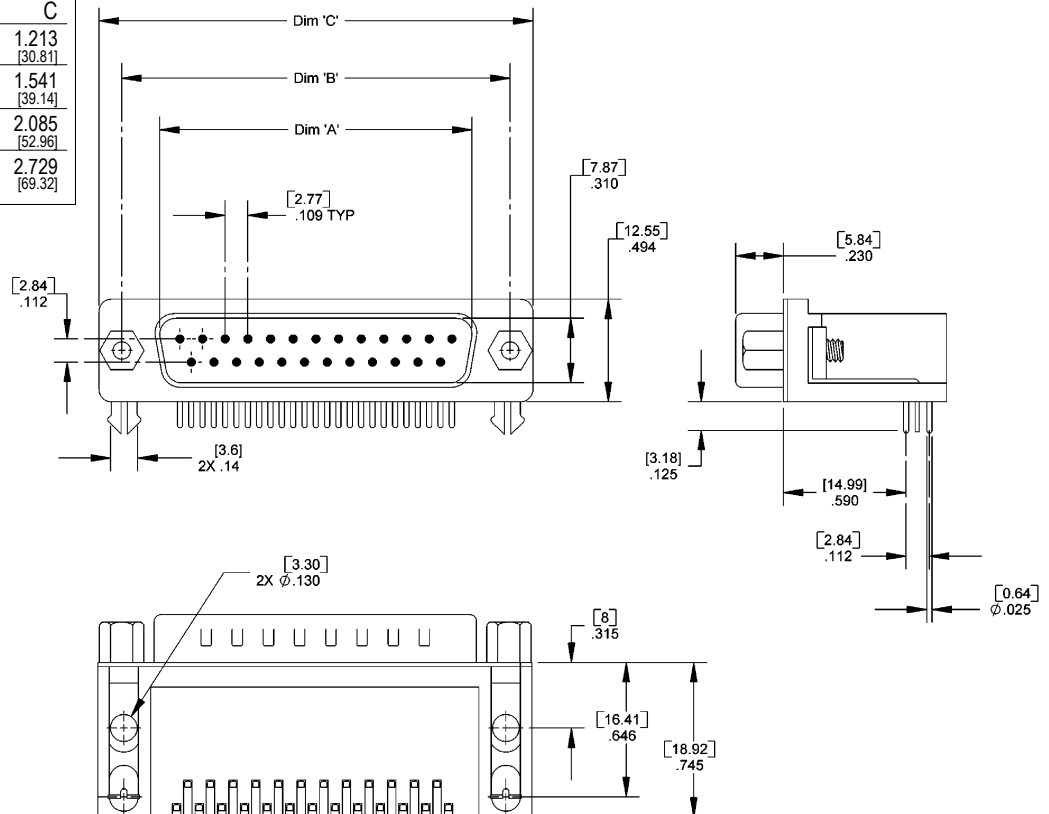
Current Rating: 1 AMP

Consult factory for additional options

CA- POSITION DPRL-11 JACKSCREW

POSITION	JACKSCREW
09 25	Blank = 4-40 jackscrew, installed
15 37	N = 4-40 jackscrew, not installed (packaged separately)

DIMENSIONS			
Position	A	B	C
09	.666 [16.92]	.984 [24.99]	1.213 [30.81]
15	.994 [25.25]	1.311 [33.30]	1.541 [39.14]
25	1.534 [38.96]	1.852 [47.04]	2.085 [52.96]
37	2.182 [55.42]	2.500 [63.50]	2.729 [69.32]



Mating Product: DSS (page 137), DSID (page 139)  
Drawing Number: CA-620273

