



# D-SUB, HIGH DENSITY SOCKET, SOLDER CUP

## SPECIFICATIONS

### ENVIRONMENTAL

Temperature Range: -55°C to +105°C

### MECHANICAL

Insulator Material: Glass-filled thermoplastic, black, UL94V-0

Shell Material: Steel

Contact Material: Copper Alloy

Contact Plating: Gold Flash

### ELECTRICAL

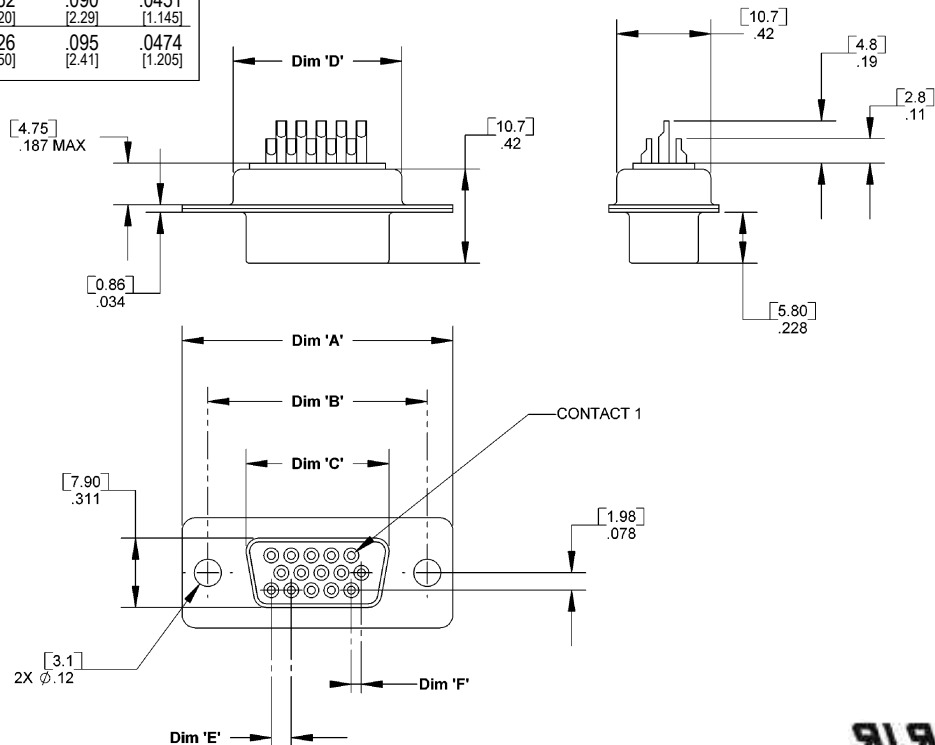
Current Rating: 1 AMP

Consult factory for additional options

CA- POSITION DHDSS

POSITION	
15	44
26	62

DIMENSIONS						
Position	A	B	C	D	E	F
15	1.21 [30.9]	.98 [25.0]	.640 [16.26]	.760 [19.30]	.090 [2.29]	.0451 [1.145]
26	1.55 [39.3]	1.31 [33.3]	.967 [24.56]	1.09 [27.70]	.090 [2.29]	.0451 [1.145]
44	2.09 [53.1]	1.85 [47.1]	1.506 [38.25]	1.62 [41.20]	.090 [2.29]	.0451 [1.145]
62	2.73 [69.5]	2.50 [63.5]	2.156 [54.76]	2.26 [57.50]	.095 [2.41]	.0474 [1.205]



Mating Product: DHDP (page 129)  
Drawing Number: CA-610234



For more information please contact our customer service department or visit our website at circuitassembly.com

Circuit Assembly Worldwide Hqtrs. 18 Thomas Street, Irvine, CA 92618-2777 USA Tel 1-949-855-7887 Fax 1-949-855-4298

