



D-SUB, HIGH DENSITY SOCKET, RIGHT ANGLE

SPECIFICATIONS

ENVIRONMENTAL

Temperature Range: -55°C to +105°C

MECHANICAL

Insulator Material: Glass-filled thermoplastic, black, UL94V-0

Shell Material: Steel

Contact Material: Copper Alloy

Contact Plating: Gold Flash

ELECTRICAL

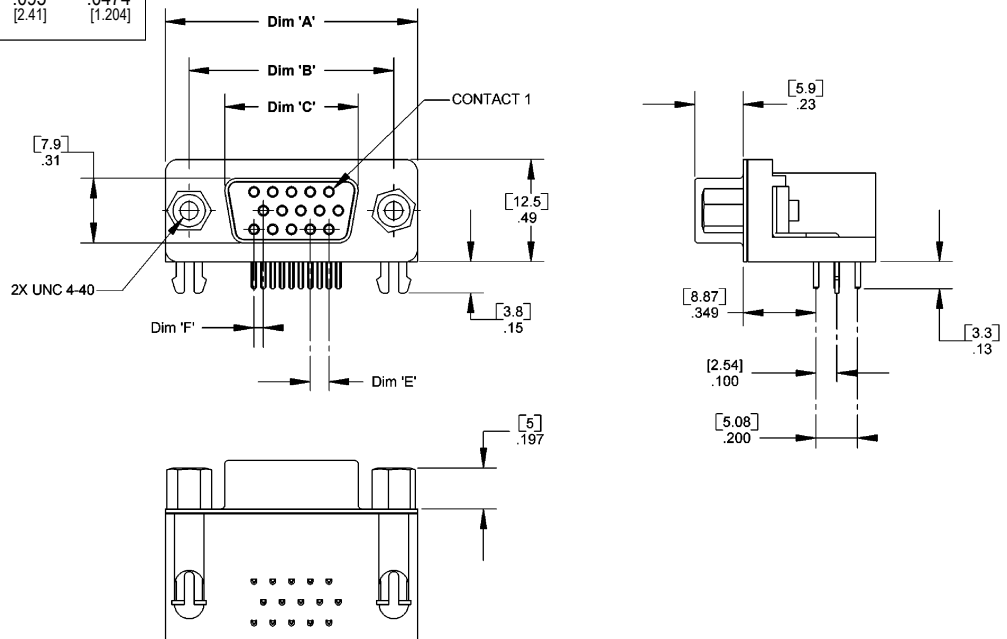
Current Rating: 1 AMP

Consult factory for additional options

CA- POSITION DHDSR-11

POSITION	
15	44
26	62

DIMENSIONS					
Position	A	B	C	E	F
15	1.21 [30.70]	.984 [24.99]	.642 [16.31]	.090 [2.29]	.0451 [1.146]
26	1.54 [39.10]	1.311 [33.30]	.969 [24.61]	.090 [2.29]	.0451 [1.146]
44	2.09 [53.10]	1.854 [47.09]	1.508 [38.30]	.090 [2.29]	.0451 [1.146]
62	2.73 [69.30]	2.500 [63.50]	2.157 [54.79]	.095 [2.41]	.0474 [1.204]



Mating Product: DHDP (page 132), DHDP (page 134)

Drawing Number: CA-610232



For more information please contact our customer service department or visit our website at circuitassembly.com

Circuit Assembly Worldwide Hqtrs. 18 Thomas Street, Irvine, CA 92618-2777 USA Tel 1-949-855-7887 Fax 1-949-855-4298