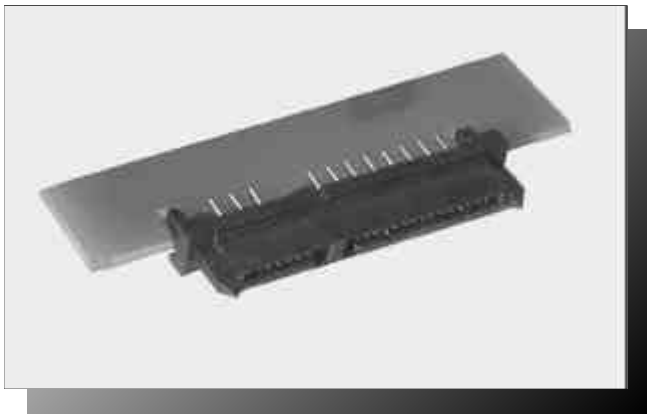




2



SERIAL ATA DEVICE SOCKET STRADDLE MOUNT

SPECIFICATIONS

ENVIRONMENTAL

Temperature Range: -20°C to +85°C

MECHANICAL

Insulator Material: High-temperature thermoplastic, UL94V-0

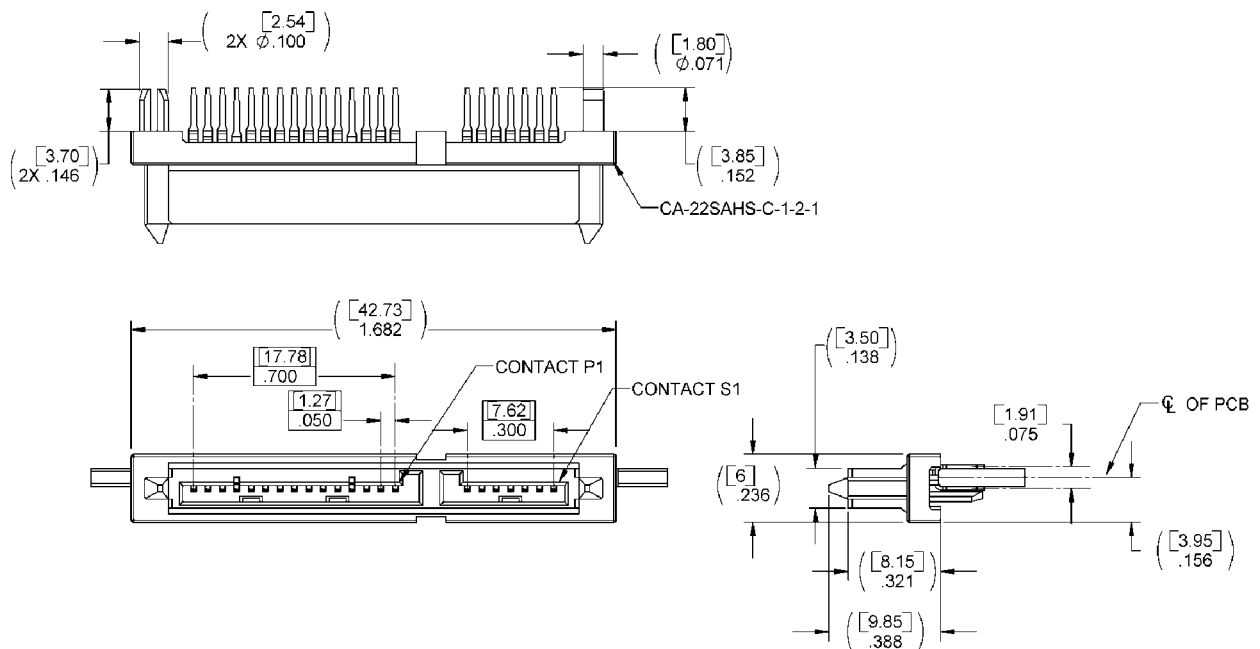
Contact Material: Copper Alloy

Contact Plating: See options below

ELECTRICAL

Current Rating: 1 AMP

CA-630022



Mating Product: SAPP, PCB edge

Drawing Number: CA-630022