

2



## FIBRE CHANNEL HSSDB9 TYPE PLUG

### SPECIFICATIONS

Meets: SFF-8480 for HSSDB9

### ENVIRONMENTAL

Temperature Range: -55°C to +105°C

### MECHANICAL

Insulator Material: Glass-filled polyester, black, UL94V-0

Shell Material: Steel

Contact Material: Copper Alloy

Contact Plating: Mating Area: 30µ IN gold over 50µ IN nickel (min)  
Solder Cup: 150µ IN tin over 50µ IN nickel (min)

### ELECTRICAL

Current Rating: 1 AMP

Consult factory for additional options

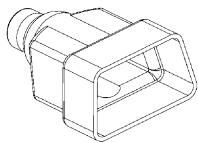
CA-09FCP- KIT

#### KIT OPTION

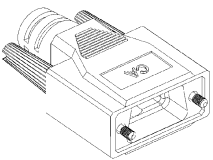
Blank = connector only

F100 = connector with metal EMI shield - 28 and 30 AWG

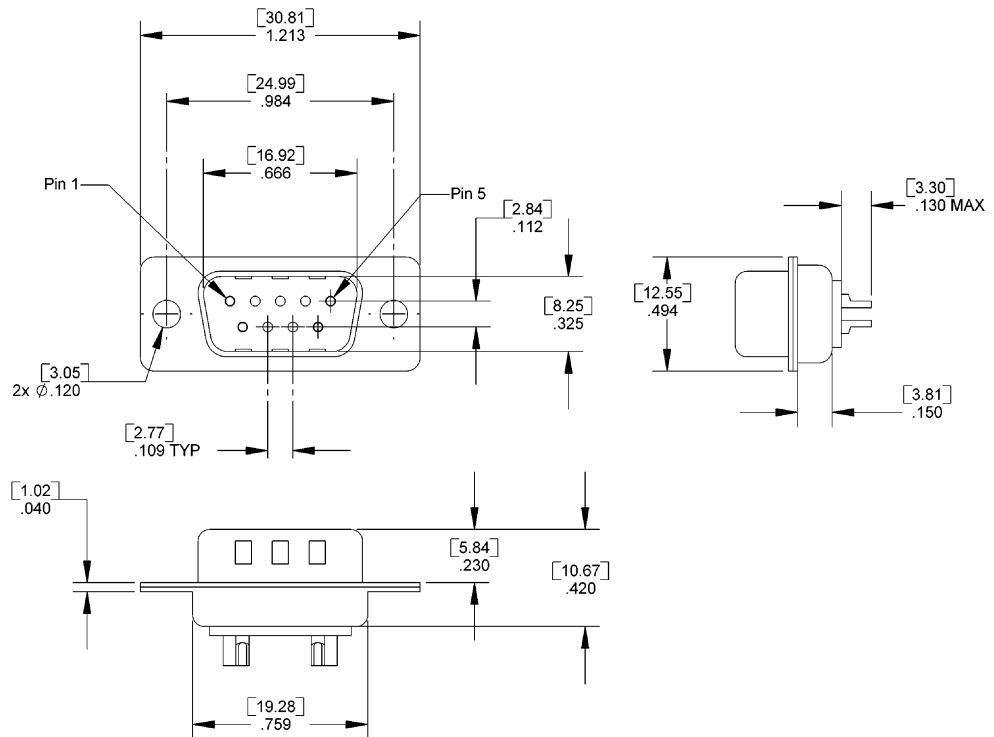
F200 = connector with metal EMI shield - 26 and 22 AWG



Metal EMI shield



Plastic Boot accessory  
Drawing # 630015



Mating Product: DSR (page 143), DSRL (page 145), DSD (page 141)

Drawing Number: CA-620374